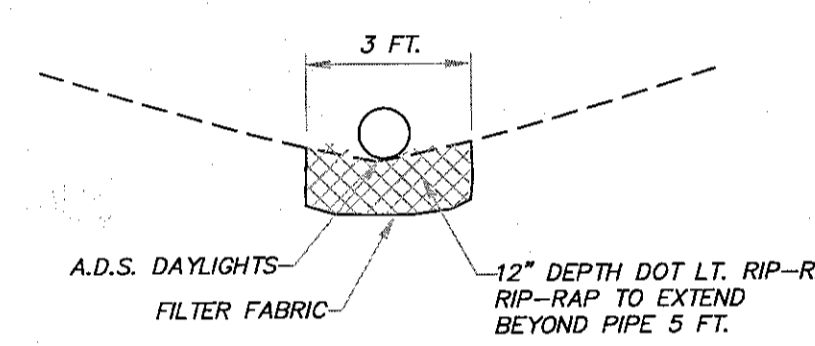
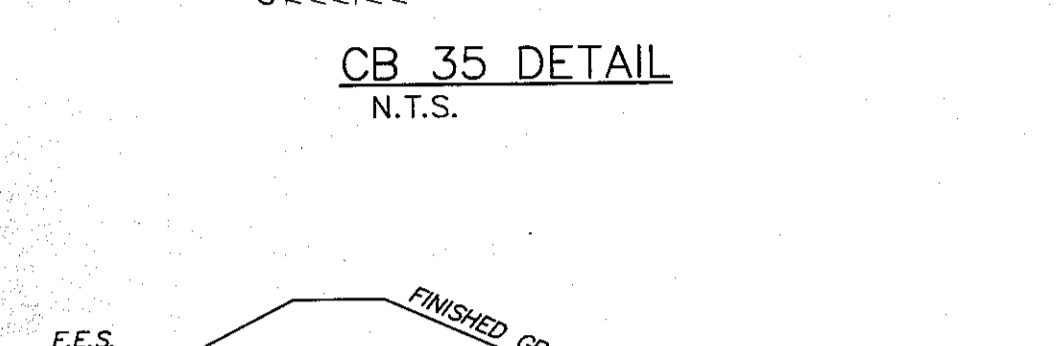
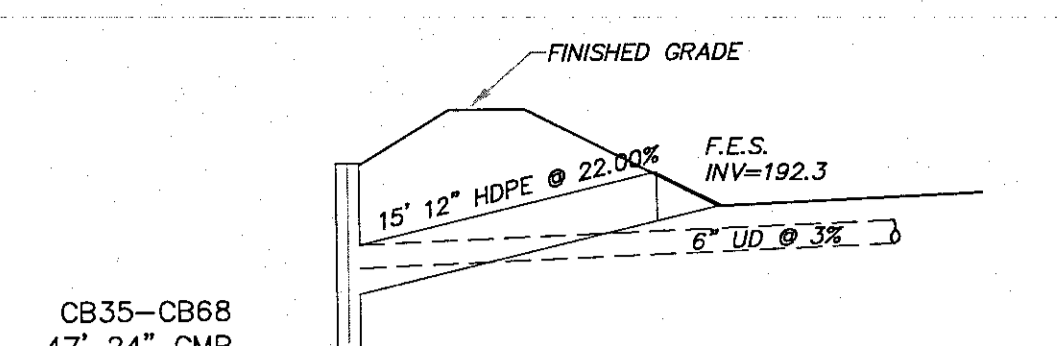
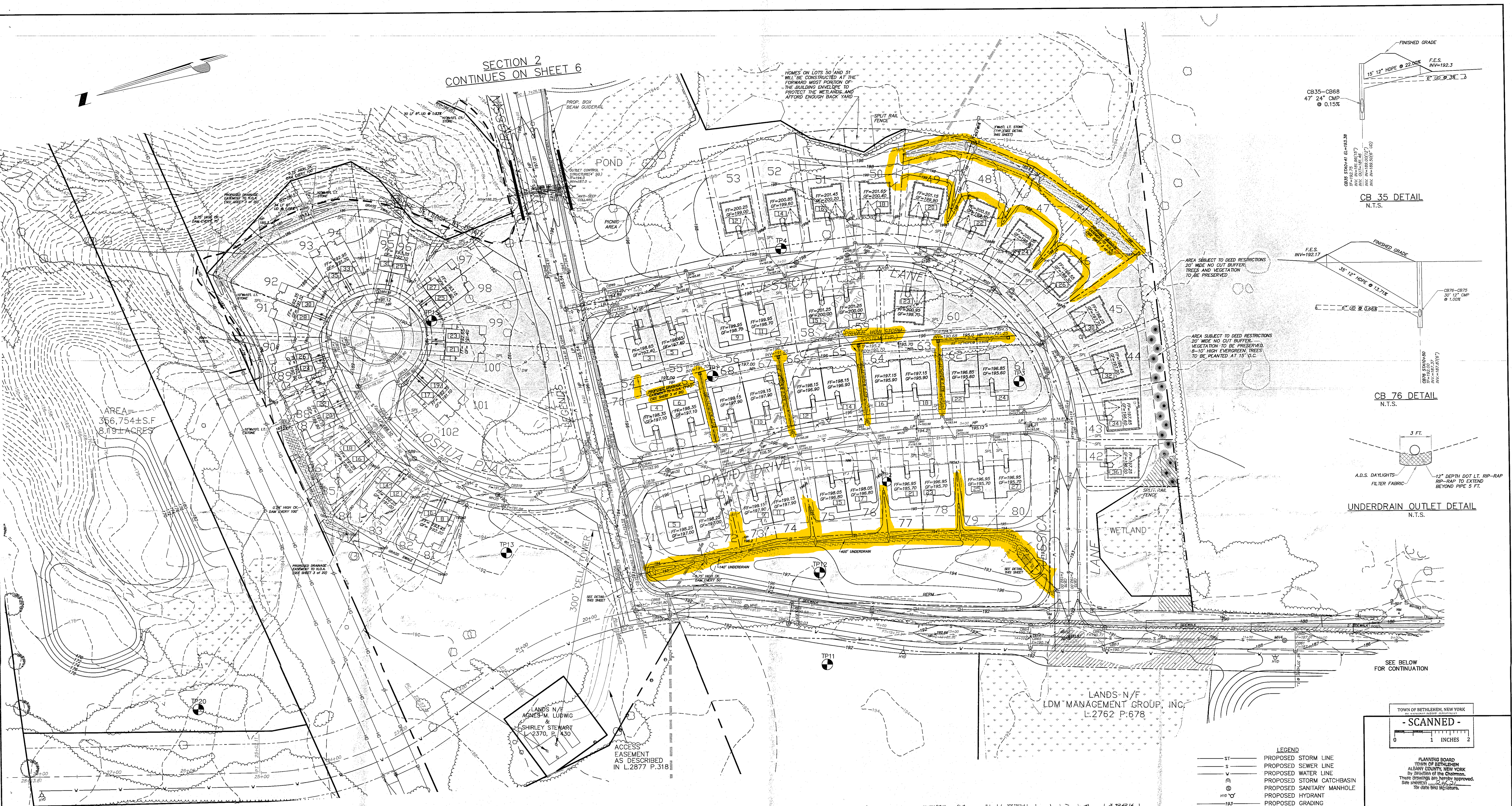


SECTION 2  
CONTINUES ON SHEET 6



AREA =  
366,754±S.F.  
8.19±ACRES

LANDS N/F  
AGNES M. LUDWIG  
SHIRLEY STEWART  
L:2370, P:430

LANDS N/F  
LDM MANAGEMENT GROUP, INC.  
L:2762 P:678

ACCESS  
EASEMENT  
AS DESCRIBED  
IN L:2877 P:318

TEST PIT DATA

PERFORMED ON NOVEMBER 14, 2005  
BY AED ENGINEERS & SURVEYORS

PERFORMED ON JULY 24, 2012  
BY AED ENGINEERS & SURVEYORS

TP1	0-12\"/>
TP2	0-12\"/>
TP3	0-12\"/>
TP4	0-12\"/>
TP5	0-12\"/>
TP6	0-12\"/>
TP7	0-12\"/>
TP8	0-12\"/>
TP9	0-12\"/>
TP10	0-12\"/>
TP11	0-12\"/>
TP12	0-12\"/>
TP13	0-12\"/>
TP14	0-12\"/>
TP15	0-12\"/>
TP16	0-12\"/>
TP17	0-12\"/>
TP18	0-12\"/>
TP19	0-12\"/>
TP20	0-12\"/>
TP21	0-12\"/>
TP22	0-12\"/>
TP23	0-12\"/>
TP24	0-12\"/>
TP25	0-12\"/>
TP26	0-12\"/>
TP27	0-12\"/>
TP28	0-12\"/>
TP29	0-12\"/>
TP30	0-12\"/>
TP31	0-12\"/>
TP32	0-12\"/>
TP33	0-12\"/>
TP34	0-12\"/>
TP35	0-12\"/>
TP36	0-12\"/>
TP37	0-12\"/>
TP38	0-12\"/>
TP39	0-12\"/>
TP40	0-12\"/>
TP41	0-12\"/>
TP42	0-12\"/>
TP43	0-12\"/>
TP44	0-12\"/>
TP45	0-12\"/>
TP46	0-12\"/>
TP47	0-12\"/>
TP48	0-12\"/>
TP49	0-12\"/>
TP50	0-12\"/>

LANDS N/F  
MANAGEMENT GROUP, INC.  
L:2762 P:678

PRESERVATION  
AREA #7  
1.32 AC

AREA =  
245,617±S.F.  
5.64±ACRES

LANDS N/F  
THOMAS V. & JANICE  
LOMBARDO  
L:2566 P:175  
TAX MAP NO. 98.00-1-3.2

SOILS STUDY BY DENTE ENGINEERING  
DEC 20, 2005  
GEO-TECHNICAL STUDY, DREAMFIELD ESTATES.  
GRADING PLAN REVIEW PROVIDED BY DENTE  
ENGINEERING IN LETTER DATED  
DECEMBER 6, 2013.

NO FENCES, STRUCTURES, OR CHANGE OF  
GRADING SHALL BE PERMITTED WITHIN ANY  
DRAINAGE/ACCESS EASEMENT LOCATED  
WITHIN THE LEGENDS PRESERVE  
CONSERVATION SUBDIVISION.

ALBANY COUNTY DEPARTMENT OF HEALTH  
DIVISION OF ENVIRONMENTAL HEALTH SERVICES  
By direction of the Commissioner of Health, these  
plans are hereby approved. See first sheet for  
date and signature.

NO.	REVISION	DATE
1	FINAL STAMPING PLANS	10/14/15
2	ENGINEERING COMMENTS	10/14/15
3	PLANNING COMMENTS	10/14/15
4	TOWN & ZONE COMMENTS	10/14/15
5	TOWN & ZONE COMMENTS	10/14/15
6	TOWN & ZONE COMMENTS	10/14/15
7	TOWN & ZONE COMMENTS	10/14/15
8	TOWN & ZONE COMMENTS	10/14/15
9	TOWN & ZONE COMMENTS	10/14/15
10	TOWN & ZONE COMMENTS	10/14/15
11	TOWN & ZONE COMMENTS	10/14/15
12	TOWN & ZONE COMMENTS	10/14/15
13	TOWN & ZONE COMMENTS	10/14/15
14	TOWN & ZONE COMMENTS	10/14/15
15	TOWN & ZONE COMMENTS	10/14/15
16	TOWN & ZONE COMMENTS	10/14/15
17	TOWN & ZONE COMMENTS	10/14/15
18	TOWN & ZONE COMMENTS	10/14/15
19	TOWN & ZONE COMMENTS	10/14/15
20	TOWN & ZONE COMMENTS	10/14/15
21	TOWN & ZONE COMMENTS	10/14/15
22	TOWN & ZONE COMMENTS	10/14/15
23	TOWN & ZONE COMMENTS	10/14/15
24	TOWN & ZONE COMMENTS	10/14/15
25	TOWN & ZONE COMMENTS	10/14/15
26	TOWN & ZONE COMMENTS	10/14/15
27	TOWN & ZONE COMMENTS	10/14/15
28	TOWN & ZONE COMMENTS	10/14/15
29	TOWN & ZONE COMMENTS	10/14/15
30	TOWN & ZONE COMMENTS	10/14/15
31	TOWN & ZONE COMMENTS	10/14/15
32	TOWN & ZONE COMMENTS	10/14/15
33	TOWN & ZONE COMMENTS	10/14/15
34	TOWN & ZONE COMMENTS	10/14/15
35	TOWN & ZONE COMMENTS	10/14/15
36	TOWN & ZONE COMMENTS	10/14/15
37	TOWN & ZONE COMMENTS	10/14/15
38	TOWN & ZONE COMMENTS	10/14/15
39	TOWN & ZONE COMMENTS	10/14/15
40	TOWN & ZONE COMMENTS	10/14/15
41	TOWN & ZONE COMMENTS	10/14/15
42	TOWN & ZONE COMMENTS	10/14/15
43	TOWN & ZONE COMMENTS	10/14/15
44	TOWN & ZONE COMMENTS	10/14/15
45	TOWN & ZONE COMMENTS	10/14/15
46	TOWN & ZONE COMMENTS	10/14/15
47	TOWN & ZONE COMMENTS	10/14/15
48	TOWN & ZONE COMMENTS	10/14/15
49	TOWN & ZONE COMMENTS	10/14/15
50	TOWN & ZONE COMMENTS	10/14/15
51	TOWN & ZONE COMMENTS	10/14/15
52	TOWN & ZONE COMMENTS	10/14/15
53	TOWN & ZONE COMMENTS	10/14/15
54	TOWN & ZONE COMMENTS	10/14/15
55	TOWN & ZONE COMMENTS	10/14/15
56	TOWN & ZONE COMMENTS	10/14/15
57	TOWN & ZONE COMMENTS	10/14/15
58	TOWN & ZONE COMMENTS	10/14/15
59	TOWN & ZONE COMMENTS	10/14/15
60	TOWN & ZONE COMMENTS	10/14/15
61	TOWN & ZONE COMMENTS	10/14/15
62	TOWN & ZONE COMMENTS	10/14/15
63	TOWN & ZONE COMMENTS	10/14/15
64	TOWN & ZONE COMMENTS	10/14/15
65	TOWN & ZONE COMMENTS	10/14/15
66	TOWN & ZONE COMMENTS	10/14/15
67	TOWN & ZONE COMMENTS	10/14/15
68	TOWN & ZONE COMMENTS	10/14/15
69	TOWN & ZONE COMMENTS	10/14/15
70	TOWN & ZONE COMMENTS	10/14/15
71	TOWN & ZONE COMMENTS	10/14/15
72	TOWN & ZONE COMMENTS	10/14/15
73	TOWN & ZONE COMMENTS	10/14/15
74	TOWN & ZONE COMMENTS	10/14/15
75	TOWN & ZONE COMMENTS	10/14/15
76	TOWN & ZONE COMMENTS	10/14/15
77	TOWN & ZONE COMMENTS	10/14/15
78	TOWN & ZONE COMMENTS	10/14/15
79	TOWN & ZONE COMMENTS	10/14/15
80	TOWN & ZONE COMMENTS	10/14/15
81	TOWN & ZONE COMMENTS	10/14/15
82	TOWN & ZONE COMMENTS	10/14/15
83	TOWN & ZONE COMMENTS	10/14/15
84	TOWN & ZONE COMMENTS	10/14/15
85	TOWN & ZONE COMMENTS	10/14/15
86	TOWN & ZONE COMMENTS	10/14/15
87	TOWN & ZONE COMMENTS	10/14/15
88	TOWN & ZONE COMMENTS	10/14/15
89	TOWN & ZONE COMMENTS	10/14/15
90	TOWN & ZONE COMMENTS	10/14/15
91	TOWN & ZONE COMMENTS	10/14/15
92	TOWN & ZONE COMMENTS	10/14/15
93	TOWN & ZONE COMMENTS	10/14/15
94	TOWN & ZONE COMMENTS	10/14/15
95	TOWN & ZONE COMMENTS	10/14/15
96	TOWN & ZONE COMMENTS	10/14/15
97	TOWN & ZONE COMMENTS	10/14/15
98	TOWN & ZONE COMMENTS	10/14/15
99	TOWN & ZONE COMMENTS	10/14/15
100	TOWN & ZONE COMMENTS	10/14/15
101	TOWN & ZONE COMMENTS	10/14/15
102	TOWN & ZONE COMMENTS	10/14/15
103	TOWN & ZONE COMMENTS	10/14/15
104	TOWN & ZONE COMMENTS	10/14/15
105	TOWN & ZONE COMMENTS	10/14/15
106	TOWN & ZONE COMMENTS	10/14/15
107	TOWN & ZONE COMMENTS	10/14/15
108	TOWN & ZONE COMMENTS	10/14/15
109	TOWN & ZONE COMMENTS	10/14/15
110	TOWN & ZONE COMMENTS	10/14/15
111	TOWN & ZONE COMMENTS	10/14/15
112	TOWN & ZONE COMMENTS	10/14/15
113	TOWN & ZONE COMMENTS	10/14/15
114	TOWN & ZONE COMMENTS	10/14/15
115	TOWN & ZONE COMMENTS	10/14/15
116	TOWN & ZONE COMMENTS	10/14/15
117	TOWN & ZONE COMMENTS	10/14/15
118	TOWN & ZONE COMMENTS	10/14/15
119	TOWN & ZONE COMMENTS	10/14/15
120	TOWN & ZONE COMMENTS	10/14/15
121	TOWN & ZONE COMMENTS	10/14/15
122	TOWN & ZONE COMMENTS	10/14/15
123	TOWN & ZONE COMMENTS	10/14/15
124	TOWN & ZONE COMMENTS	10/14/15
125	TOWN & ZONE COMMENTS	10/14/15
126	TOWN & ZONE COMMENTS	10/14/15
127	TOWN & ZONE COMMENTS	10/14/15
128	TOWN & ZONE COMMENTS	10/14/15
129	TOWN & ZONE COMMENTS	10/14/15
130	TOWN & ZONE COMMENTS	10/14/15
131	TOWN & ZONE COMMENTS	10/14/15
132	TOWN & ZONE COMMENTS	10/14/15
133	TOWN & ZONE COMMENTS	10/14/15
134	TOWN & ZONE COMMENTS	10/14/15
135	TOWN & ZONE COMMENTS	10/14/15
136	TOWN & ZONE COMMENTS	10/14/15
137	TOWN & ZONE COMMENTS	10/14/15
138	TOWN & ZONE COMMENTS	10/14/15
139	TOWN & ZONE COMMENTS	10/14/15
140	TOWN & ZONE COMMENTS	10/14/15
141	TOWN & ZONE COMMENTS	10/14/15
142	TOWN & ZONE COMMENTS	10/14/15
143	TOWN & ZONE COMMENTS	10/14/15
144	TOWN & ZONE COMMENTS	10/14/15
145	TOWN & ZONE COMMENTS	10/14/15
146	TOWN & ZONE COMMENTS	10/14/15
147	TOWN & ZONE COMMENTS	10/14/15
148	TOWN & ZONE COMMENTS	10/14/15
149	TOWN & ZONE COMMENTS	10/14/15
150	TOWN & ZONE COMMENTS	10/14/15

TOWN OF BETHLEHEM, NEW YORK  
SCANNED -  
0 1 2 INCHES  
PLANNING BOARD  
TOWN OF BETHLEHEM  
ALBANY COUNTY, NEW YORK  
By direction of the Chairman,  
These drawings are hereby approved.  
See sheets 1-3, 5-7,  
for date and signature.  
CHARMAN, PLANNING BOARD

ALBANY COUNTY DEPT. OF HEALTH

GRADING PLAN-1  
LEGENDS PRESERVE  
CONSERVATION SUBDIVISION  
JOLLEY ROAD

TOWN OF BETHLEHEM COUNTY OF ALBANY  
STATE OF NEW YORK

AED ENGINEERS & SURVEYORS  
411 Union Street Schenectady, N.Y. 12305  
518-377-0315 Fax: 518-377-0379

DATE: OCTOBER 1, 2012 SCALE: 1"=50' DWG: 9833-SITE SHEET OF 21